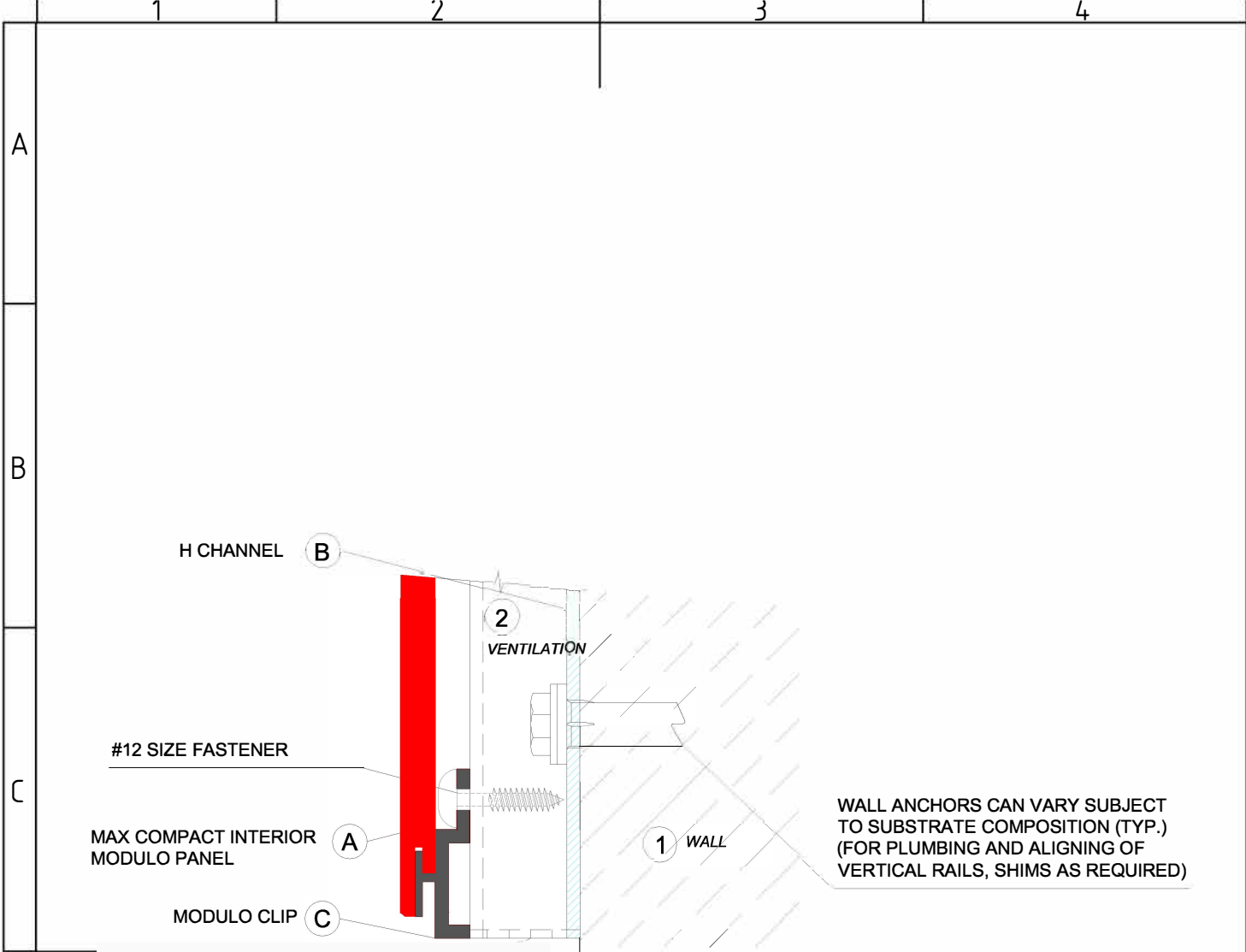


view of cladding

	Content
A 110	horizontal section gap
A 104	window - reveal
A 105	external corner
A 106	internal corner
A 108	vertical section
A 103	base detail
A 107	vertical section

view of cladding

Max Compact Interior Modulo Details

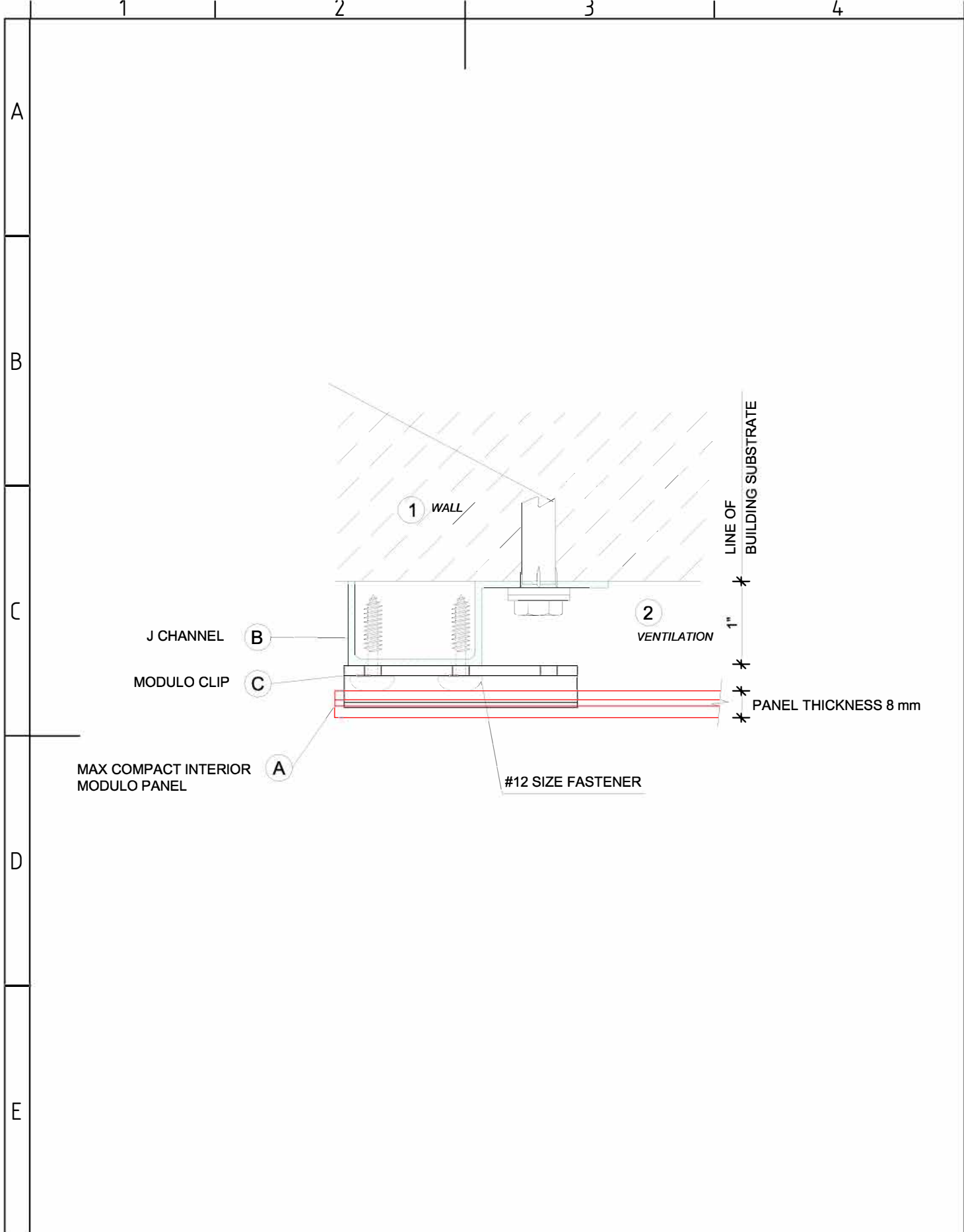


PANEL THICKNESS 8 mm 1" LINE OF BUILDING SUBSTRATE

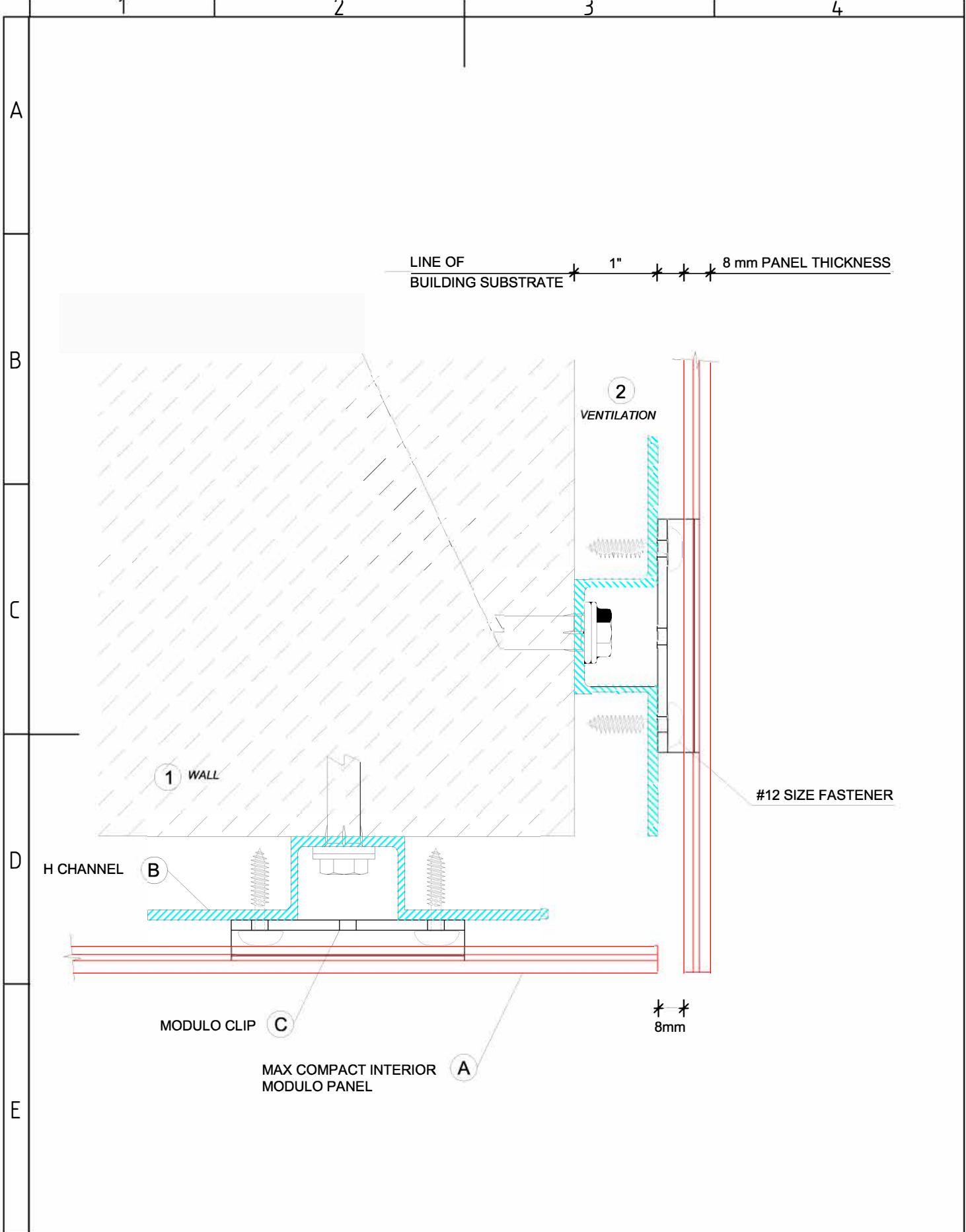
WALL ANCHORS CAN VARY SUBJECT TO SUBSTRATE COMPOSITION (TYP.) (FOR PLUMBING AND ALIGNING OF VERTICAL RAILS, SHIMS AS REQUIRED)

A	Max Compact Interior Modulo Panel
B	h profile
C	Modulo clip
1	rear ventilation
2	rear ventilation
F	
Zust	Änderung Datum Name (Urspr.)

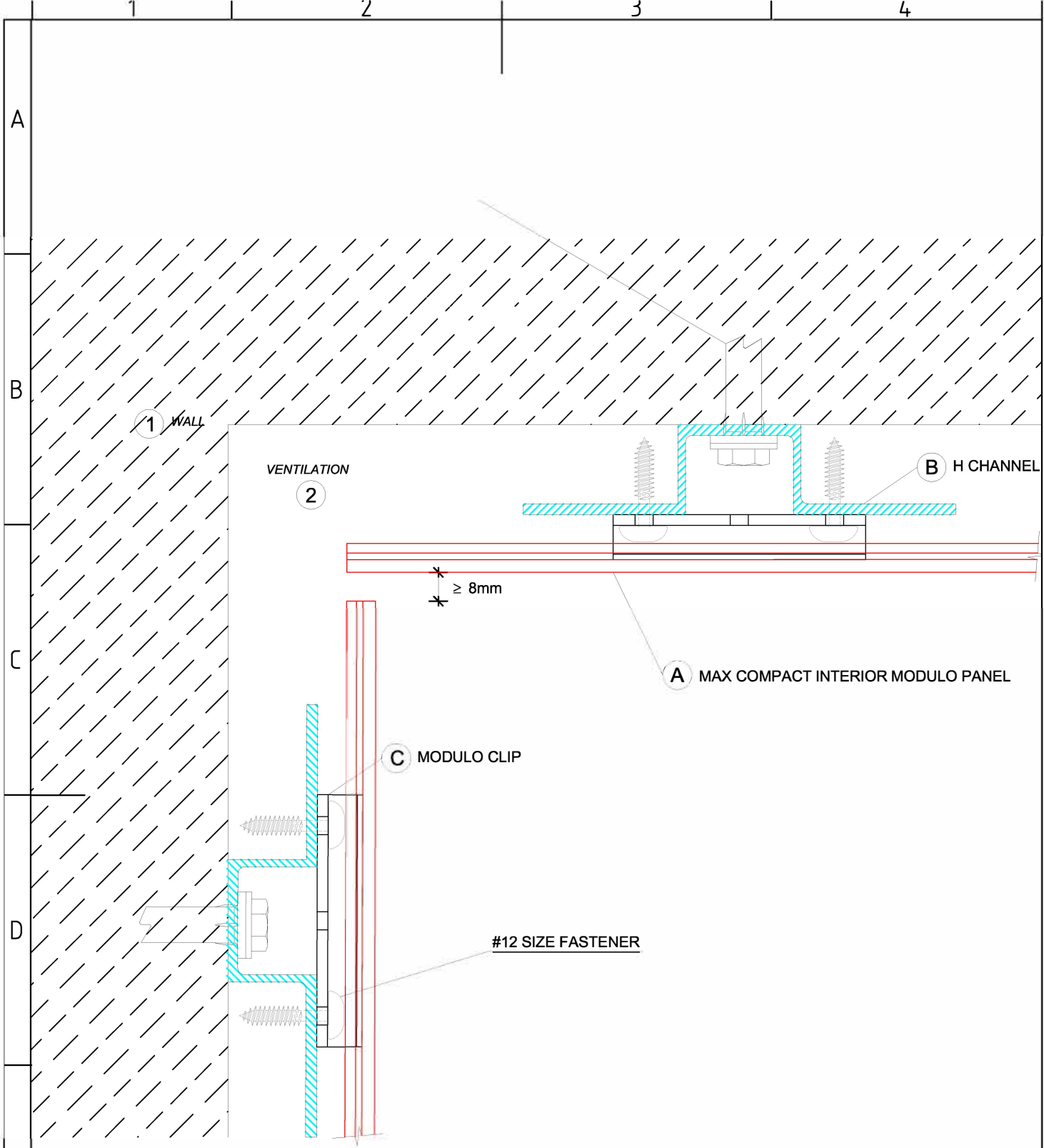
Base of wall detail A103	
Max Compact Interior Modulo Details	
(Ers. f.:)	(Ers. d.:) 2015/11



F	A	Max Compact Interior Modulo Panel	Wall termination & jamb detail A104
	B	J profile	
	C	Modulo clip	
	1	wall	
	2	rear ventilation	
			Max Compact Interior Modulo Details
Zust	Änderung	Datum Name (Urspr.)	



F	A	Max Compact Interior Modulo Panel	Outside corner detail A105
	B	h profile	
	C	Modulo clip	
	1	wall	
	2	rear ventilation	
			Max Compact Interior Modulo Details
Zust	Änderung	Datum Name (Urspr.)	(Ers. f.) (Ers. d.) 2015/11

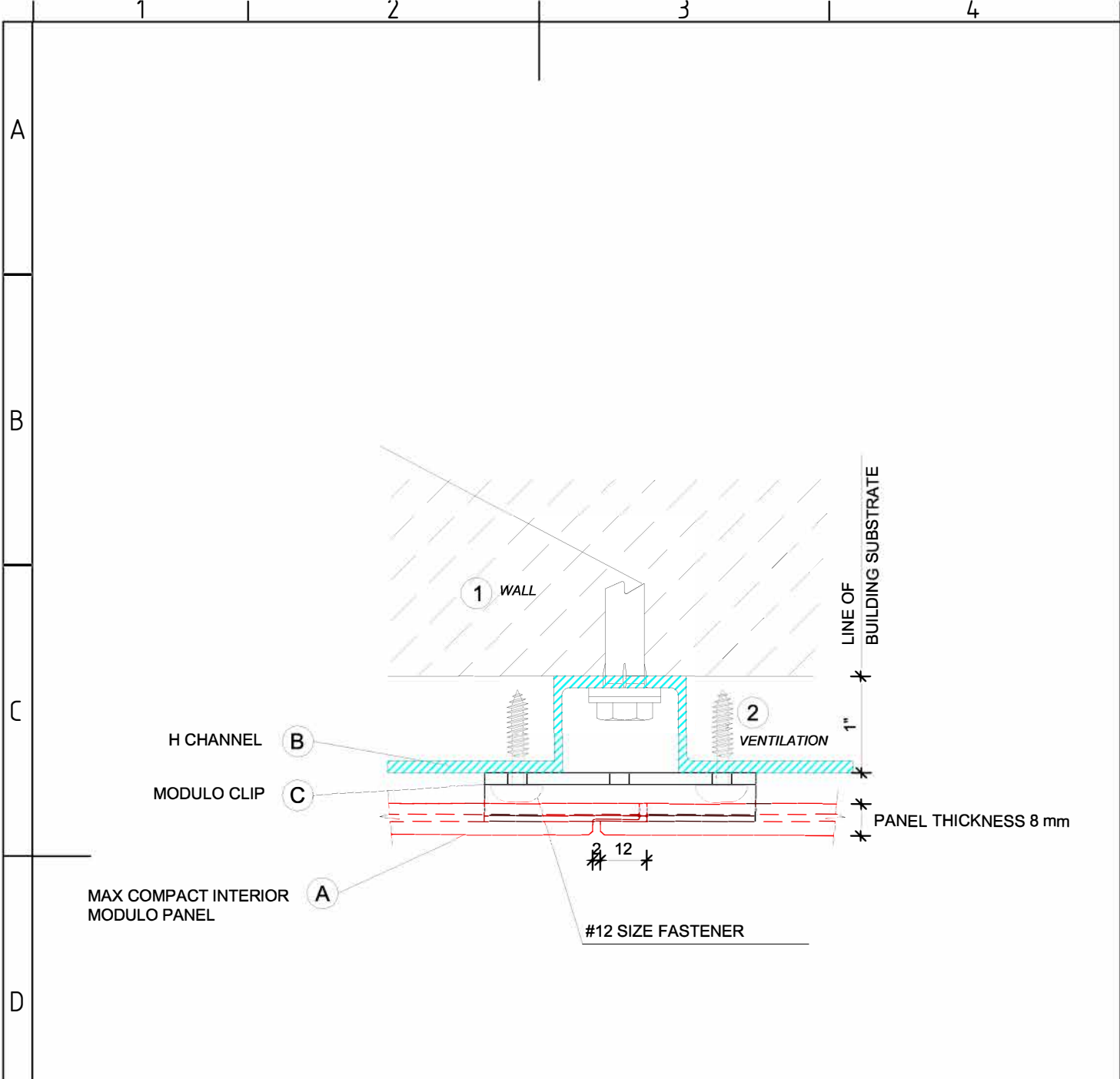


LINE OF BUILDING SUBSTRATE 1" PANEL THICKNESS 8 mm

A	Max Compact Interior Modulo Panel
B	h profile
C	Modulo clip
1	wall
2	rear ventilation
F	

Inside corner detail A106

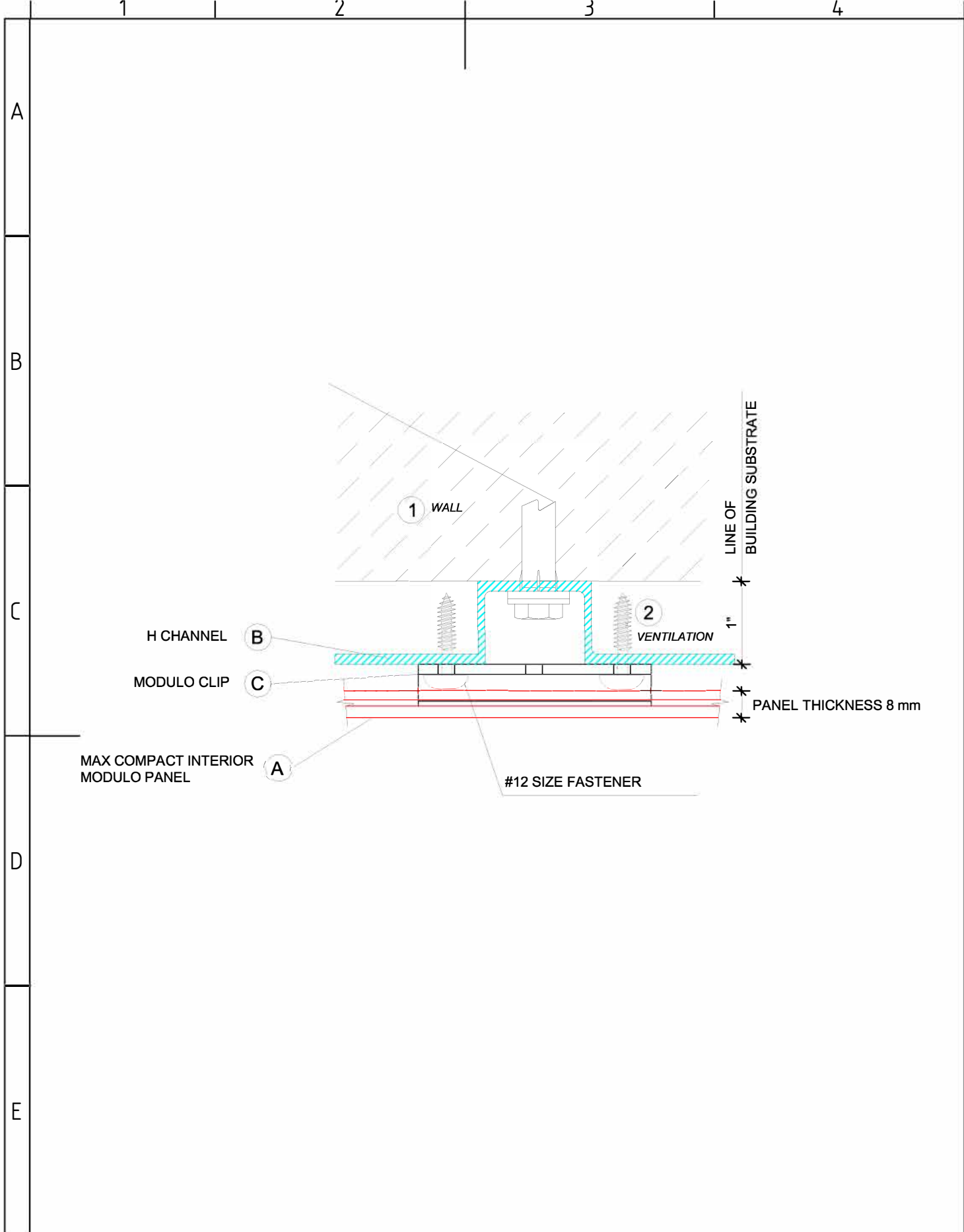
Max Compact Interior Modulo Details



NOTE: This detail only applies to Modulo 2x2 and 2x4 sizes.

Plank Formats will have square edges and open joints spaced per page 17 of the Modulo 2020 Brochure.

F	A	Max Compact Interior Modulo Panel	Vertical panel joint detail A107
	B	h profile	
	C	Modulo clip	
	1	wall	
	2	rear ventilation	
			Max Compact Interior Modulo Details
Zust	Änderung	Datum Name (Urspr.)	(Ers. f.): (Ers. d.): 2015/11



F	A	Max Compact Interior Modulo Panel	<h2>Intermediate support detail A108</h2>
	B	h profile	
	C	Modulo clip	
	1	wall	
	2	rear ventilation	
			<h3>Max Compact Interior Modulo Details</h3>
Zust	Änderung	Datum Name (Urspr.)	(Ers. f.:) (Ers. d.): 2015/11

1 2 3 4

A

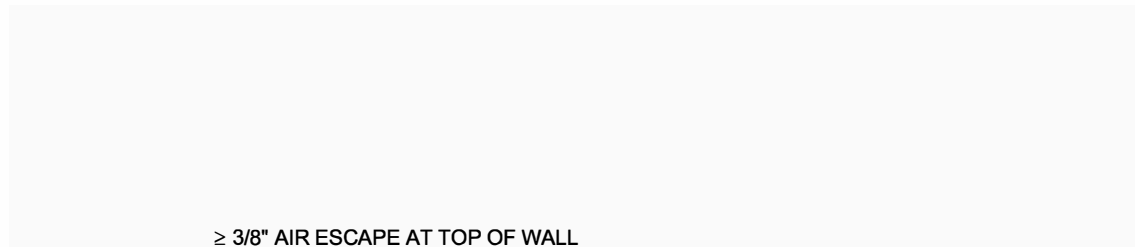
B

C

D

E

F



≥ 3/8" AIR ESCAPE AT TOP OF WALL

COLOR MATCHED SCREWS FOLLOW MANUFACTURER'S RECOMMENDATIONS FOR FIXED/SLIDING POINTS AND FASTENER SPACING REQUIRED (TYP.)

≥ 3/4"

2 VENTILATION

1 WALL

MAX COMPACT INTERIOR MODULO PANEL

A

H CHANNEL

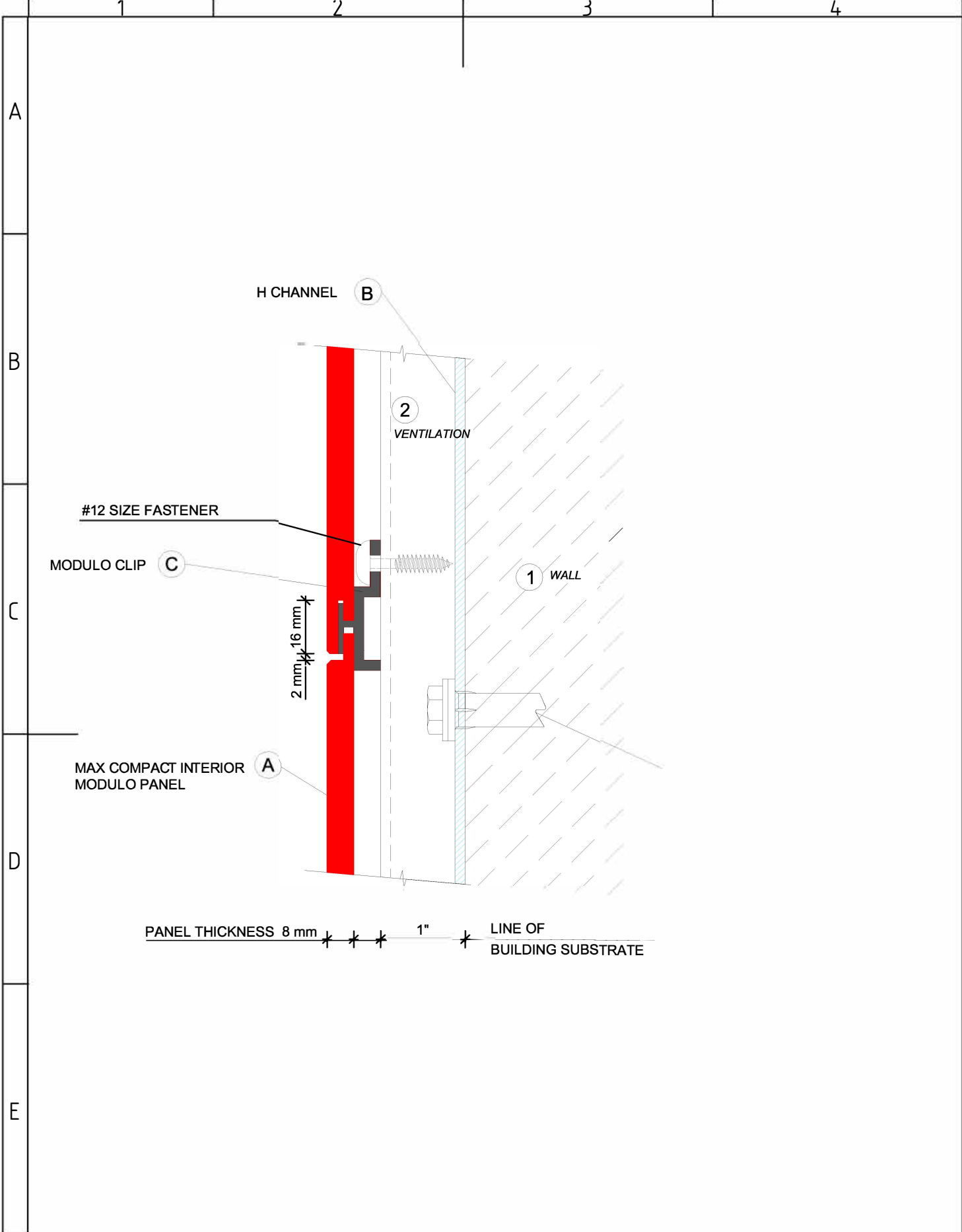
B

PANEL THICKNESS 8 mm * * * 1" * LINE OF BUILDING SUBSTRATE

A	Max Compact Interior Modulo Panel
B	h profile
C	Modulo clip
1	wall
2	rear ventilation

Top of wall detail A109

Max Compact Interior Modulo Details



F	A	Max Compact Interior Modulo Panel
	B	h profile
	C	Modulo clip
	1	wall
	2	rear ventilation
Zust	Änderung	Datum Name (Urspr.)

<h2>Horizontal joint detail A110</h2>			
		<h3>Max Compact Interior Modulo Details</h3>	
		(Ers. f.):	(Ers. d.): 2015/11

1 2 3 4

A

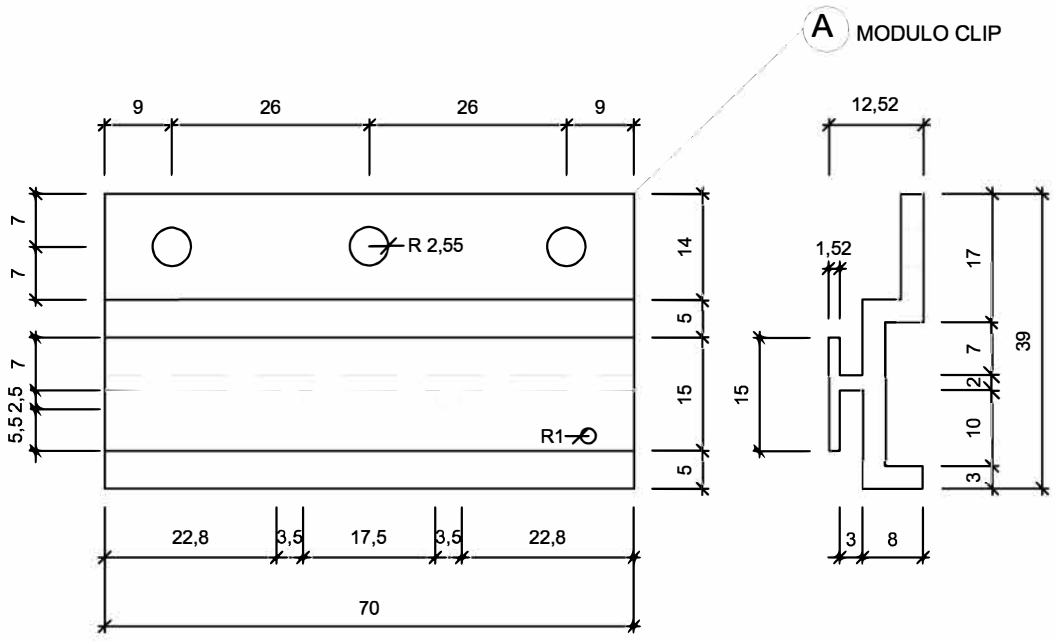
B

C

D

E

F



A	Modulo clip	
Zust	Änderung	Datum Name (Urspr.)

Modulo clip	
Max Compact Interior Modulo Details	
(Ers. f.:)	(Ers. d.:) 2015/11