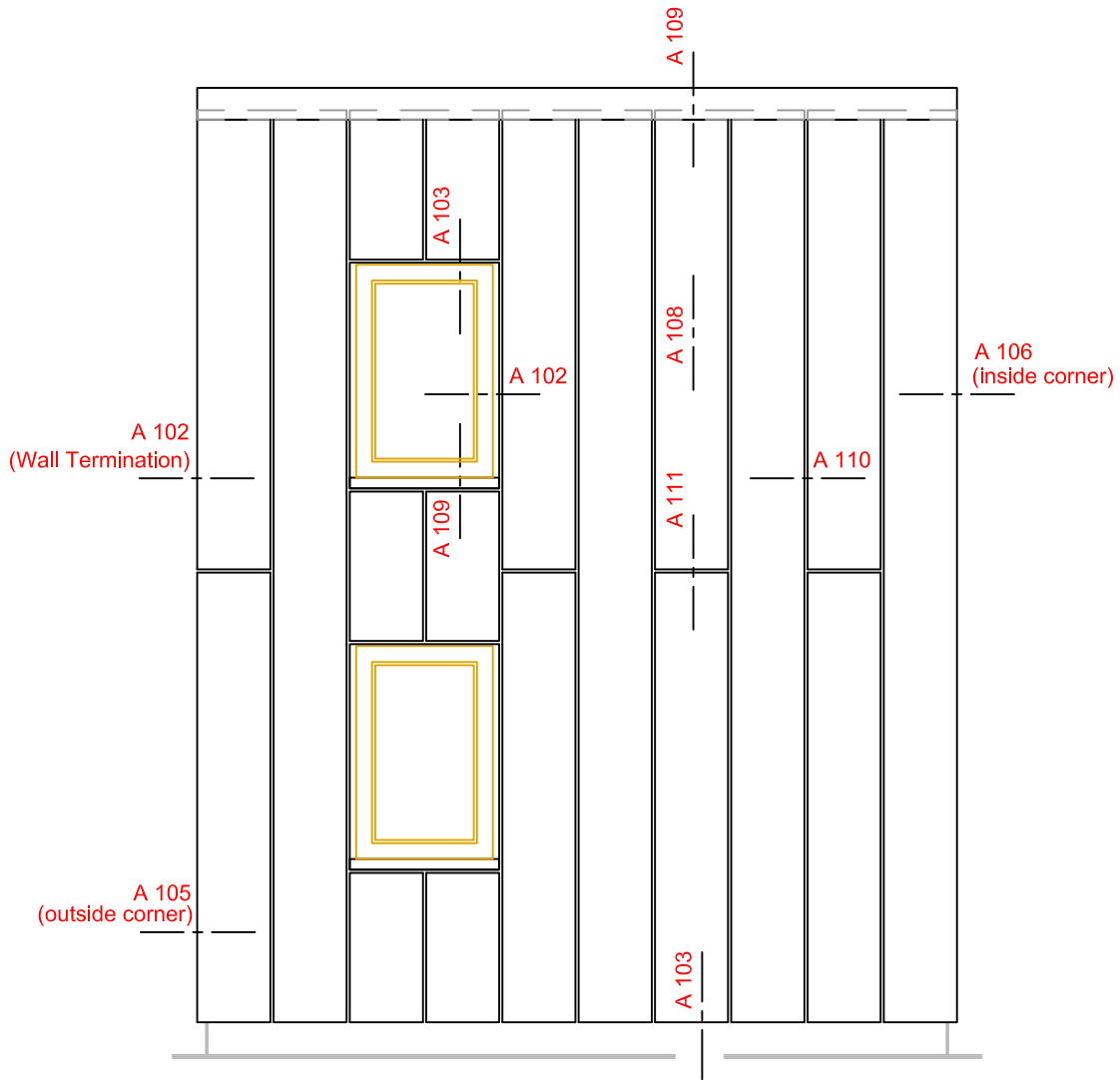


# MAX EXTERIOR MODULO

## VERTICAL INSTALLATION DETAILS

### GENERAL NOTES:

1. MODULO IN VERTICAL APPLICATION IS A PROGRESSIVE INSTALLATION ACROSS ANY GIVEN ELEVATION. PLEASE PREPARE AND COORDINATE TRADES APPROPRIATELY.
2. THESE DETAILS ARE FOR INSTALLED HEIGHTS BELOW 40'- FOR NFPA285 COMPLIANT ASSEMBLY, ALL 1" EXTRUSIONS MUST RUN VERTICALLY.
3. CUT PANELS AT ENDS/CORNERS/TERMINATIONS (WHERE THE MODULO EDGE IS REMOVED) MUST BE ATTACHED WITH A COLOR MATCHED FASTENER AND 5/16" SHIM BEHIND.
4. CLIPS AND FASTENERS MAY BE COVERED WITH FLASHING BY OTHERS, FLASHING MUST NOT INHIBIT AIR ENTRY/ESCAPE AND MUST NOT FASTEN THROUGH THE PANEL IN A MANNER THAT DOES NOT ALLOW THE PANEL TO EXPAND AND CONTRACT.
5. MODULO LOCKING PIN (1) PER PANEL MUST BE INSTALLED ON THE BOTTOM LEFT CLIP OF EACH PANEL IN MODULO VERTICAL APPLICATION.



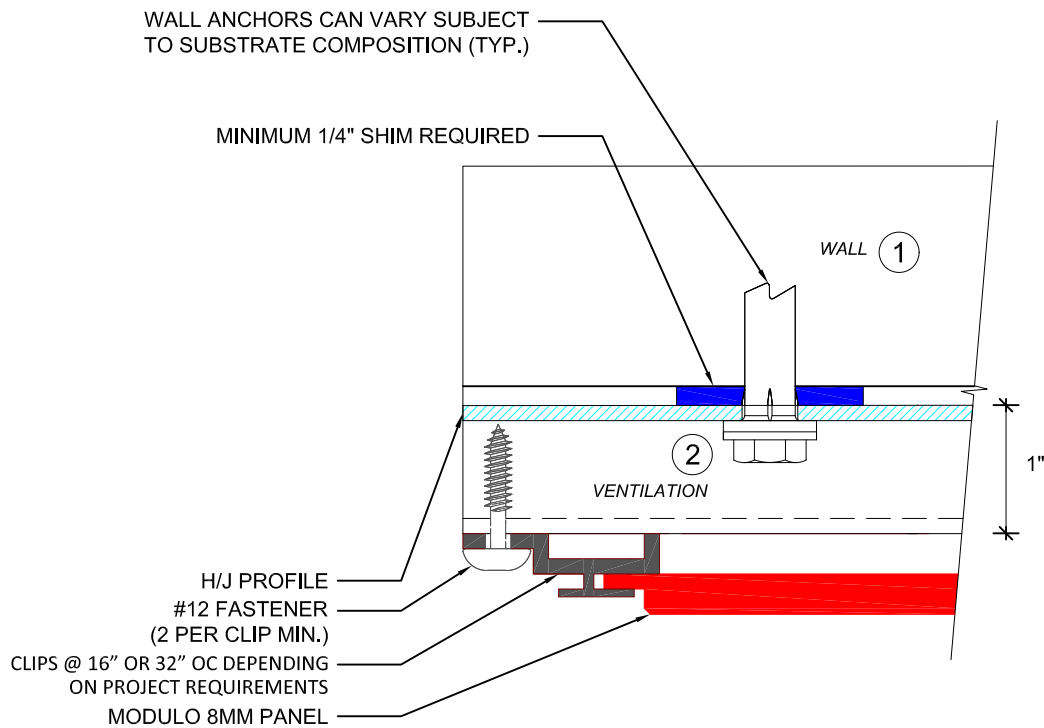
View of Cladding

	Content
A102.2a	Wall Termination / Window Jamb Detail (Option A)
A102.2b	Wall Termination / Window Jamb Detail (Option B)
A103	Base of Wall / Window Head Detail
A105a	Outside Corner Detail for Panels with Modulo Edge (Option A)
A105b	Outside Corner Detail for Panels with Cut Edge (Option B)
A106	Inside Corner Detail
A108	Sections Detail (Intermediate Support)
A109	Top of Wall / Window Sill Detail
A110.1	Vertical Panel Joint
A111	Horizontal Panel Joint

View of Cladding

MAX Exterior Modulo  
Vertical Installation Details

# PLAN VIEW

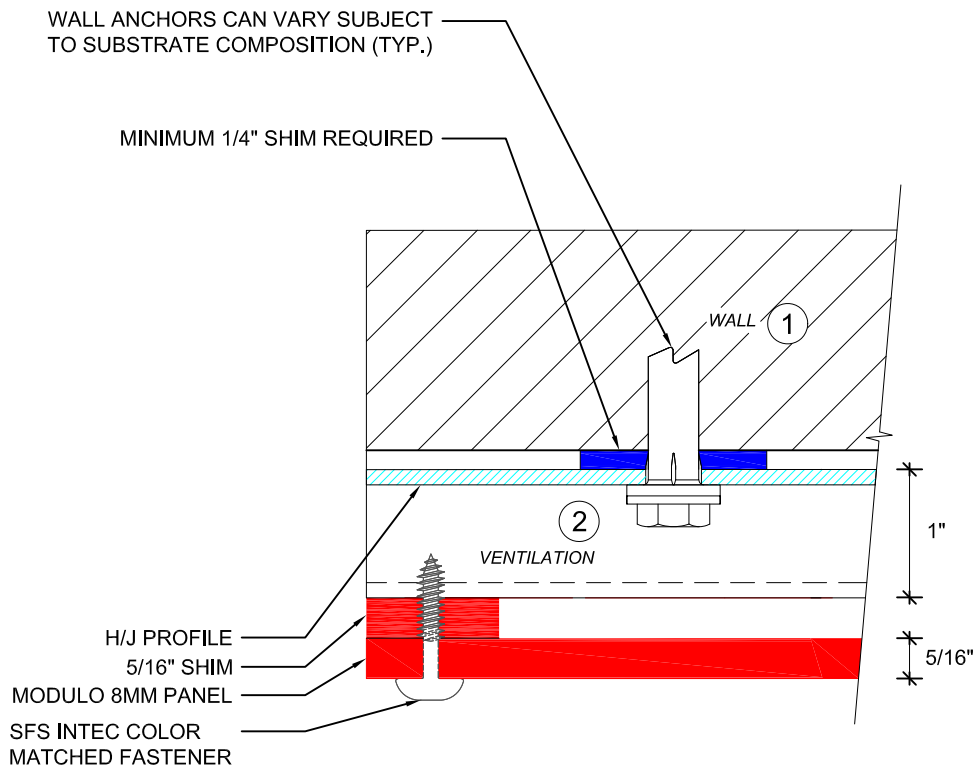


**NOTES:**

1. IF RUNNING SUBSTRUCTURE HORIZONTALLY IT MUST BE MOUNTED OVER 1/4" SHIMS AT THE WALL.
2. CLIP OR FASTENER MAY BE COVERED WITH FLASHING BY OTHERS.
3. AT PANEL TERMINATIONS SFS INTEC COLOR MATCHED FASTENER TO BE USED ON LESS THAN FULL PANELS (WITH MODULO EDGE CUT OFF) MODULO CLIPS MAY BE USED ON FULL PANELS.

		Wall Termination / Window Jamb Detail (Option A) A102.2
		MAX Exterior Modulo Vertical Installation Details

# PLAN VIEW

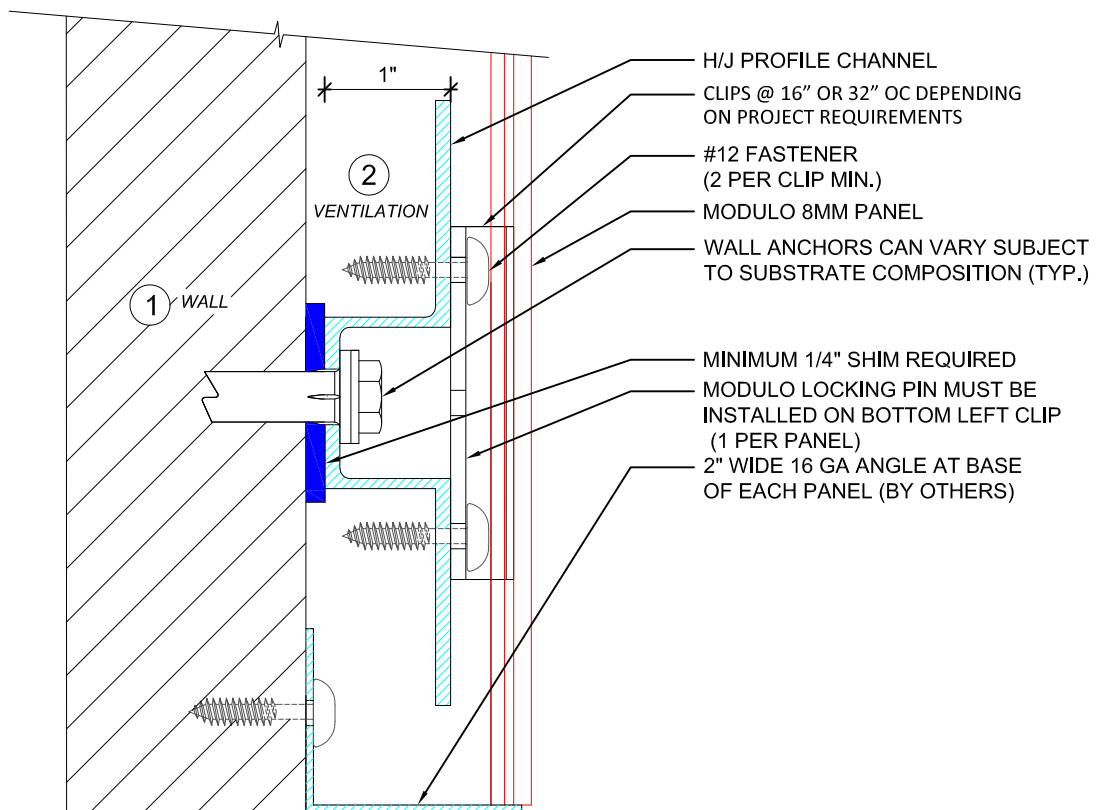


**NOTES:**

1. IF RUNNING SUBSTRUCTURE HORIZONTALLY IT MUST BE MOUNTED OVER 1/4" SHIMS AT THE WALL.
2. CLIP OR FASTENER MAY BE COVERED WITH FLASHING BY OTHERS.
3. AT PANEL TERMINATIONS SFS INTEC COLOR MATCHED FASTENER TO BE USED ON LESS THAN FULL PANELS (WITH MODULO EDGE CUT OFF) MODULO CLIPS MAY BE USED ON FULL PANELS.

		Wall Termination / Window Jamb Detail (Option B) A102.2
		MAX Exterior Modulo Vertical Installation Details

# SECTION VIEW



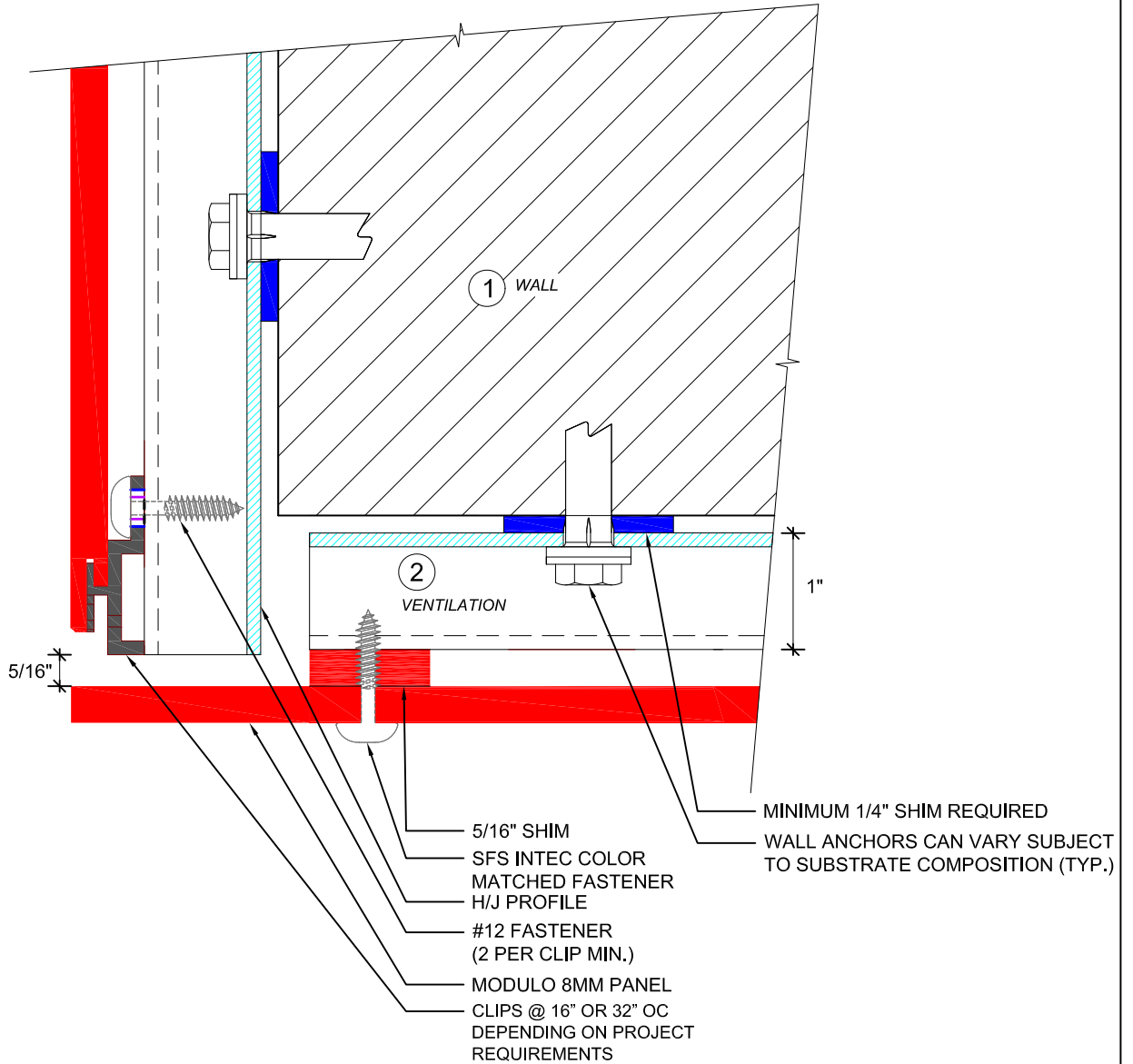
**NOTES:**

1. IF RUNNING SUBSTRUCTURE HORIZONTALLY IT MUST BE MOUNTED OVER  $\frac{1}{4}$ " SHIMS AT THE WALL.
2. MAXIMUM EDGE DISTANCE FROM TOP OR BOTTOM OF PANEL TO FIRST CLIP IS  $3\frac{1}{4}$ ".
3. ANGLE AT BASE MUST BE 2" WIDE AND NOT CONTINUOUS.
4. FOR PANELS WIDER THAN 12", USE 2 PIECES OF 2" 16GA ANGLE AT THE BASE OF PANEL.
5. DEPTH OF ANGLE AT BASE OF PANEL WILL VARY BASED ON WALL CAVITY DEPTH AND PROJECT REQUIREMENTS

		Base Of Wall / Window
		Head Detail A103
		MAX Exterior Modulo
		Vertical Installation Details



# PLAN VIEW



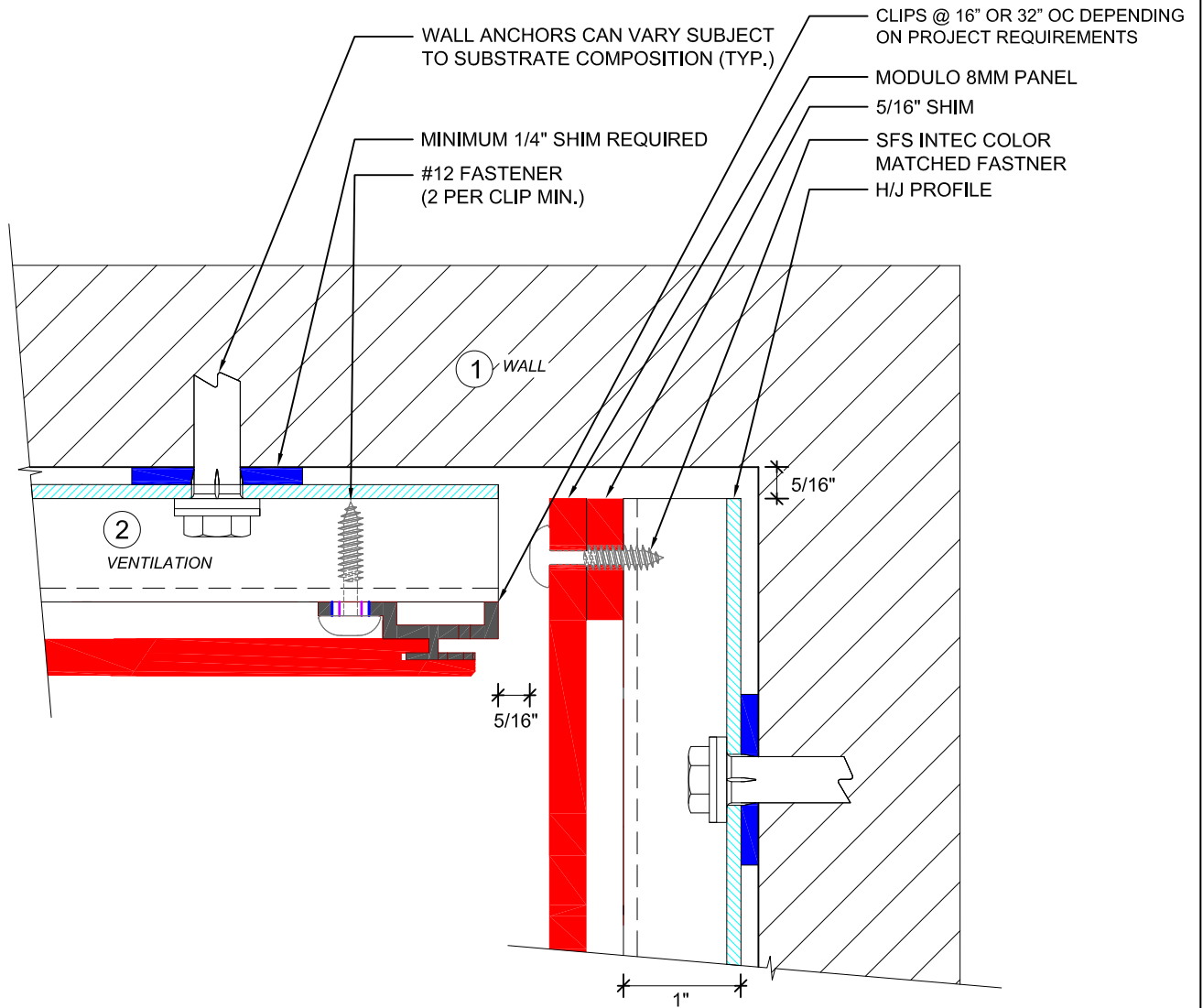
**NOTES:**

1. IF RUNNING SUBSTRUCTURE HORIZONTALLY IT MUST BE MOUNTED OVER  $\frac{1}{4}$ " SHIMS AT THE WALL.
2. AT PANEL TERMINATIONS SFS INTEC COLOR MATCHED FASTENER TO BE USED ON LESS THAN FULL PANELS (WITH MODULO EDGE CUT OFF) MODULO CLIPS MAY BE USED ON FULL PANELS.

Outside Corner Detail For Panels  
with Cut Edge (Option B) A105

MAX Exterior Modulo  
Vertical Installation Details

# PLAN VIEW



**NOTES:**

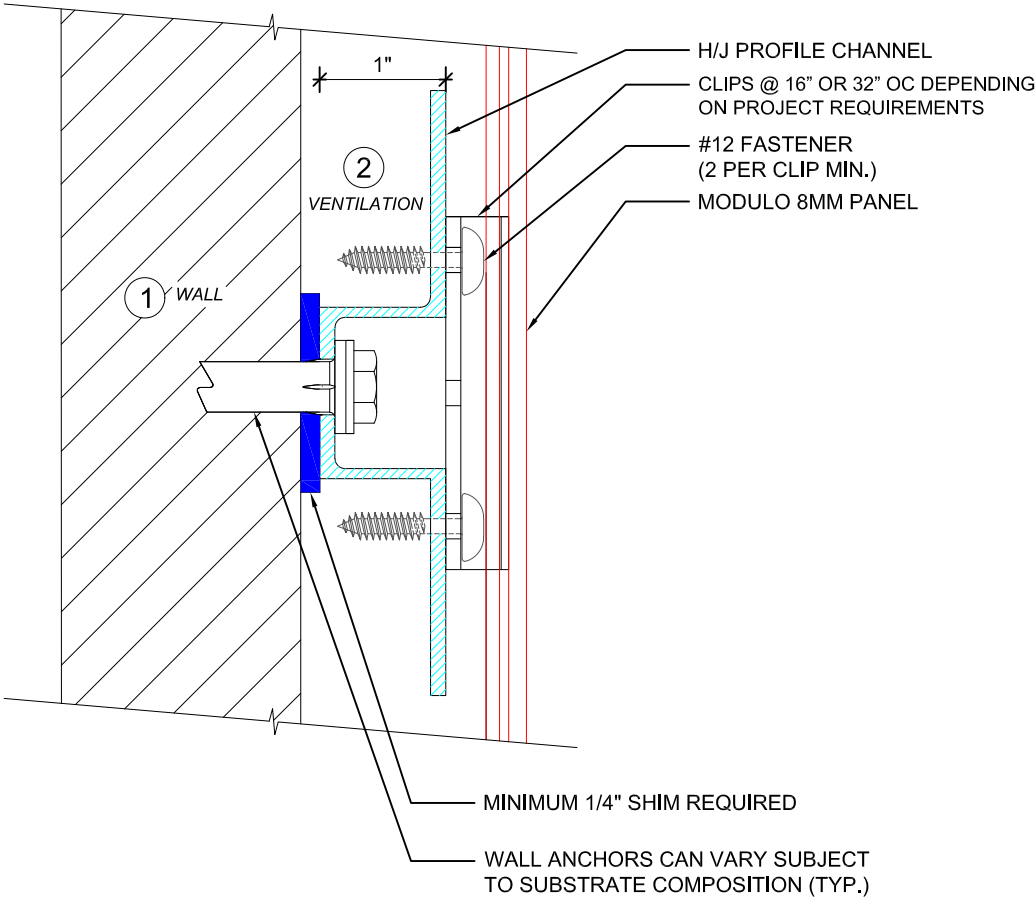
1. IF RUNNING SUBSTRUCTURE HORIZONTALLY IT MUST BE MOUNTED OVER 1/4" SHIMS AT THE WALL.
2. AT PANEL TERMINATIONS SFS INTEC COLOR MATCHED FASTENER TO BE USED ON LESS THAN FULL PANELS (WITH MODULO EDGE CUT OFF) MODULO CLIPS MAY BE USED ON FULL PANELS.

Inside Corner Detail A106

MAX Exterior Modulo  
Vertical Installation Details



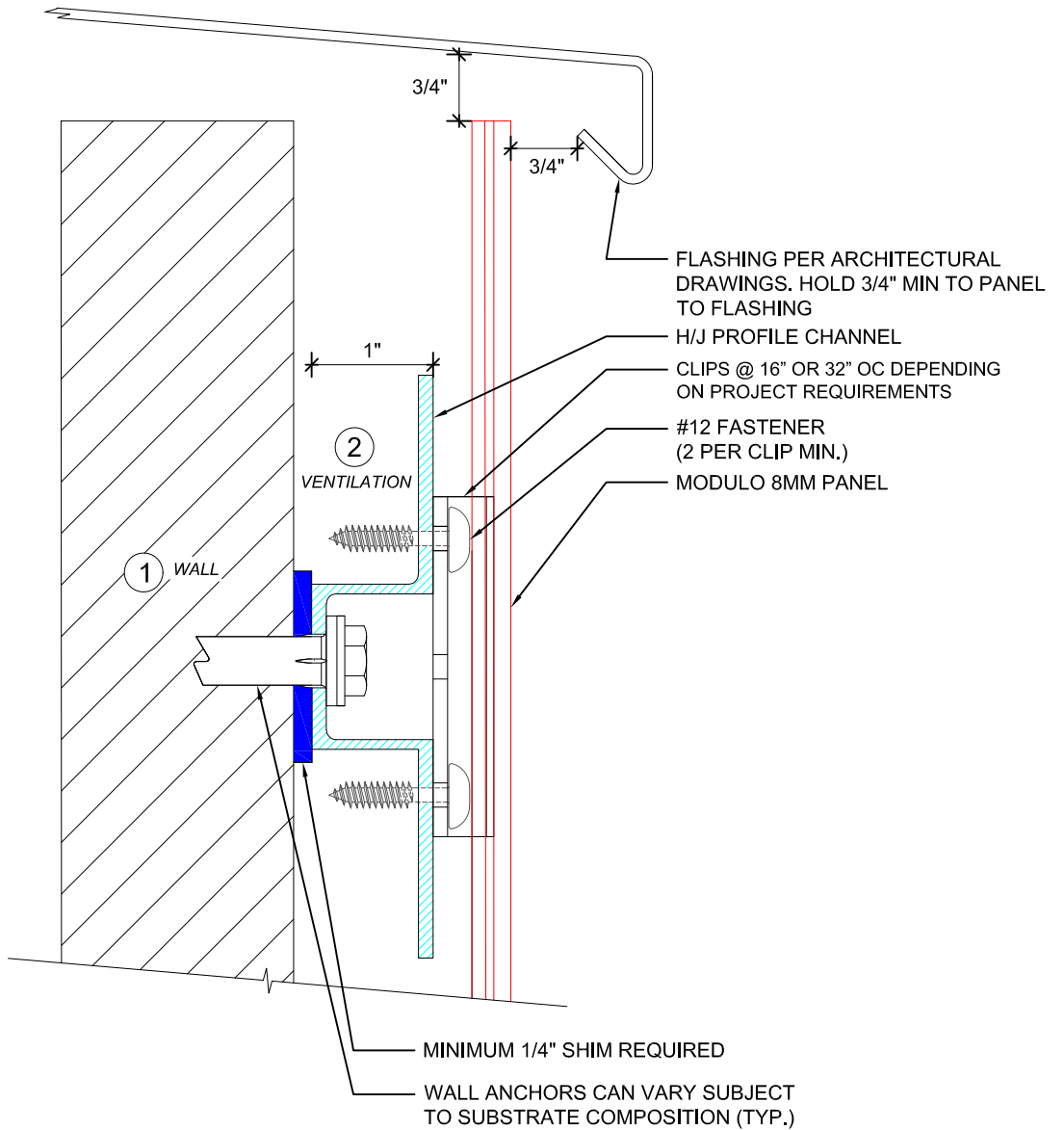
# SECTION VIEW



NOTE: IF RUNNING SUBSTRUCTURE HORIZONTALLY IT MUST BE MOUNTED OVER 1/4" SHIMS AT THE WALL.

		Section Detail
		(Intermediate Support) A108
		MAX Exterior Modulo
		Vertical Installation Details

# SECTION VIEW

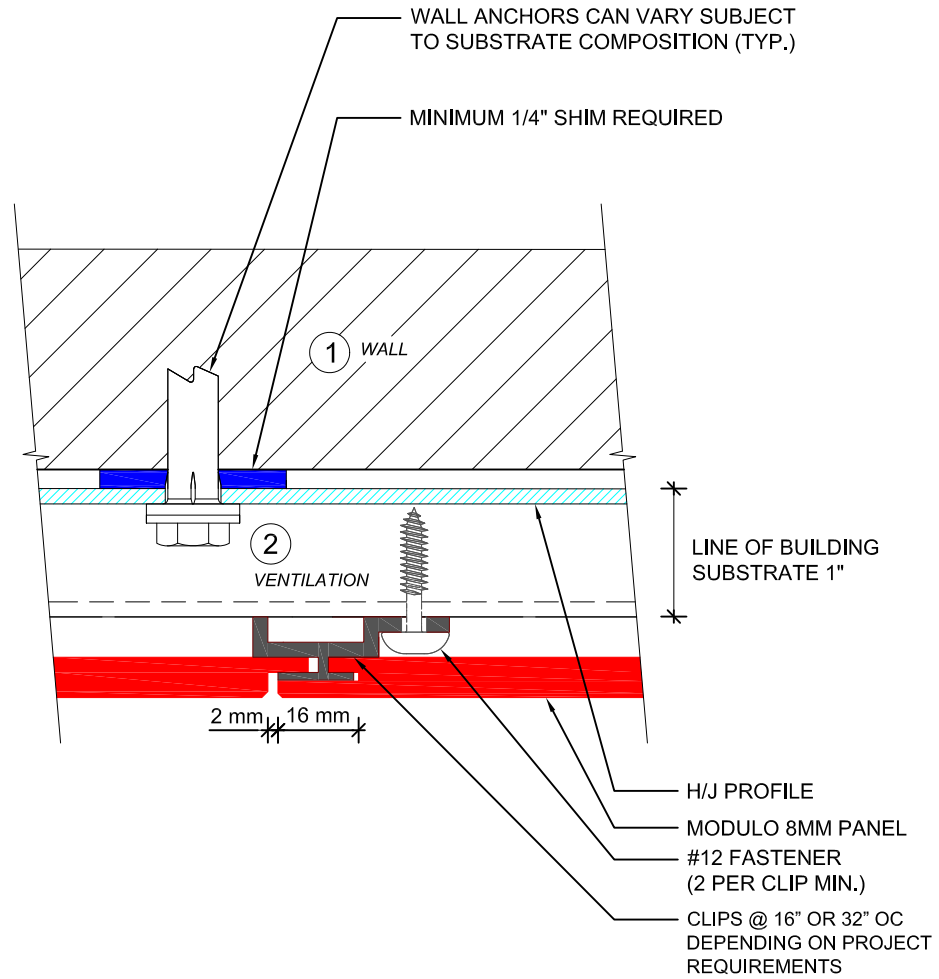


**NOTES:**

1. IF RUNNING SUBSTRUCTURE HORIZONTALLY IT MUST BE MOUNTED OVER 1/4" SHIMS AT THE WALL.
2. MAXIMUM EDGE DISTANCE FROM TOP OR BOTTOM OF PANEL TO FIRST CLIP IS 3 1/4".

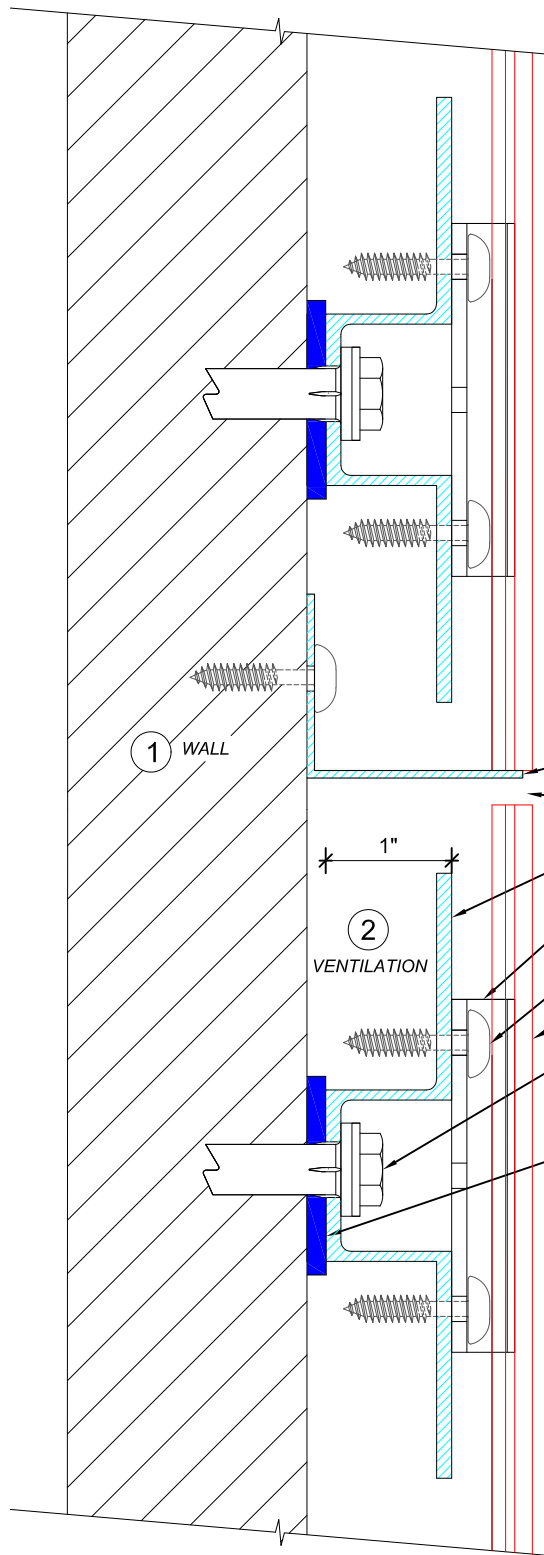
		Top Of Wall / Window Sill Detail A109
		MAX Exterior Modulo Vertical Installation Details

# PLAN VIEW



NOTE: IF RUNNING SUBSTRUCTURE HORIZONTALLY IT MUST BE MOUNTED OVER 1/4" SHIMS AT THE WALL.

		Vertical Panel Joint A110
		MAX Exterior Modulo Vertical Installation Details



# SECTION VIEW

1 WALL

2 VENTILATION

- 2" WIDE 16 GA ANGLE AT BASE OF EACH PANEL (BY OTHERS)
- 5/16" JOINT BETWEEN PANELS
- H/J PROFILE CHANNEL
- CLIPS @ 16" OR 32" OC DEPENDING ON PROJECT REQUIREMENTS
- #12 FASTENER (2 PER CLIP MIN.)
- MODULO 8MM PANEL
- WALL ANCHORS CAN VARY SUBJECT TO SUBSTRATE COMPOSITION (TYP.)
- MINIMUM 1/4" SHIM REQUIRED

**NOTES:**

1. IF RUNNING SUBSTRUCTURE HORIZONTALLY IT MUST BE MOUNTED OVER 1/4" SHIMS AT THE WALL.
2. MAXIMUM EDGE DISTANCE FROM TOP OR BOTTOM OF PANEL TO FIRST CLIP IS 3 3/4".
3. SMALLER HORIZONTAL JOINTS ARE POSSIBLE DEPENDING ON PANEL SIZE.


**Horizontal Panel Joint A111**

**MAX Exterior Modulo Vertical Installation Details**