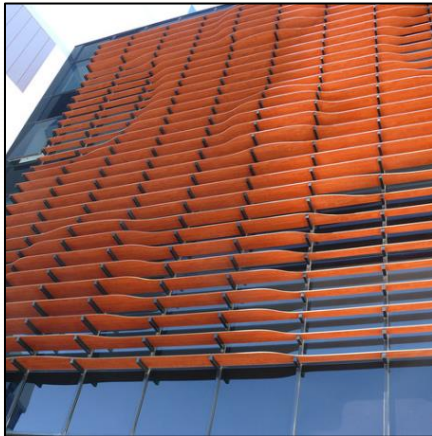


Sunblinds using Max Exterior



Max Exterior Panels can be used as infill panels for Sun Shade applications in thicknesses from 8 to 15mm.

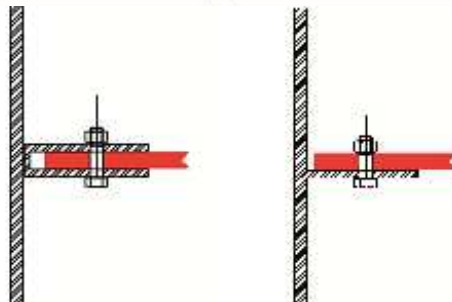


The following recommendations should be observed:

1. Minimum width of the shade element is 4" (100mm)
2. Every element should be secured on at least 2 sides with minimum of 2 fasteners per side
3. Edge distance to first fastener cannot be less than 3/4" (20mm)
4. Installation of elements must use (1) fixed point and sliding points for the balance of the fastening holes.
5. Elements need a minimum of 5/16" (8mm) joint space to adjacent component parts or other panels.
6. Ventilation must be guaranteed at all times.
7. Allowable fastening distance varies by panel thickness per chart below. These distances are valid for low wind load. In any case, fastener distances must be determined for the specific application and materials.

Panel Thickness	Maximum Distance between fasteners	Strain L/300 in mm
5/16" (8mm)	≤ 39.37" (≤ 1000mm)	3.0
3/8" (10mm)	≤ 43.31" (≤ 1100mm)	3.6
1/2" (12mm)	≤ 47.24" (≤ 1200mm)	3.6
19/32" (15mm)	≤ 51.18" (≤ 1300mm)	3.2

Typical mounting details, 8mm space must be held at ends of mounting points



Additional info can be found on pages 96-99 of "Technique Exterior":

http://www.fundermax.at/fileadmin/redakteure/Downloads_DEUTSCH/Technische_Informationen_und_Datenblaetter/Exterior_Technique_GB_WEB.pdf

FunderMax North America Inc.
2015 Ayrlesly Town Blvd., Suite 202
27273 Charlotte, NC, USA

P +1 980 299 0035
office.america@fundermax.biz
www.fundermax.com

Headquarter:
FunderMax GmbH
Klagenfurter Straße 87-89
A-9300 St. Veit/Glan, Austria

P +43 (0) 5/9494-0
office@fundermax.biz
www.fundermax.at